

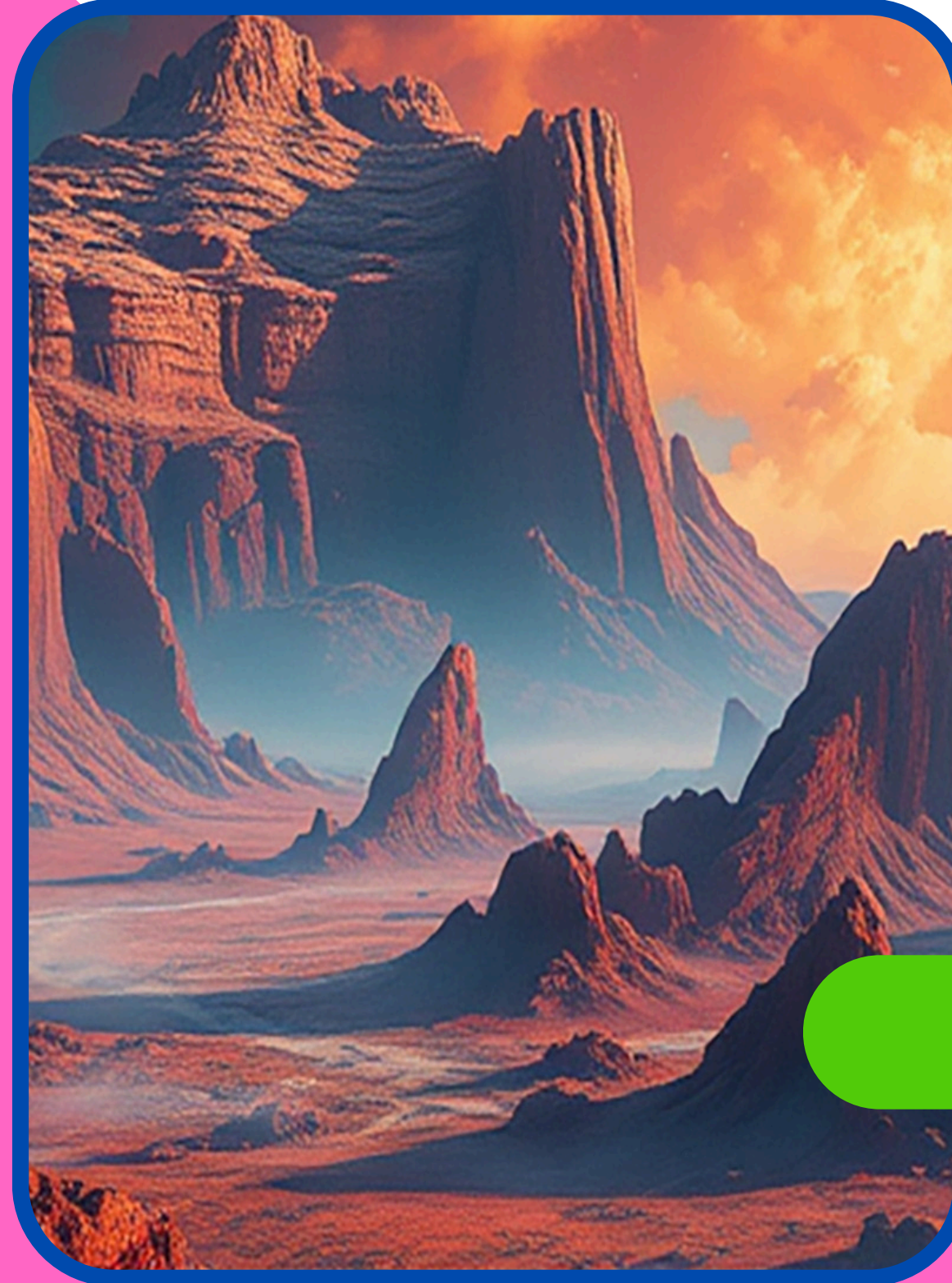


Welcome To
Mars Exchanges

THE FINANCIAL HUB OF ASIA

ABOUT OUR **MARS EXCHANGE**

- Mars Exchange is Leading Asia. It is an one of the in the Financial Hub Of Asia.
- Asia is a one of Largest Continent In This World In the decades leading up to 1997, a group of booming economies in Southeast Asia—like Thailand, Indonesia, Tokyo They were models of growth, attracting massive amounts of foreign investment with high interest rates and stable, fixed exchange rates pegged to the U.S. Dollar.
- Tokyo Exchange business market and trading environment with financial communication and corporate presentation themes



coingecko



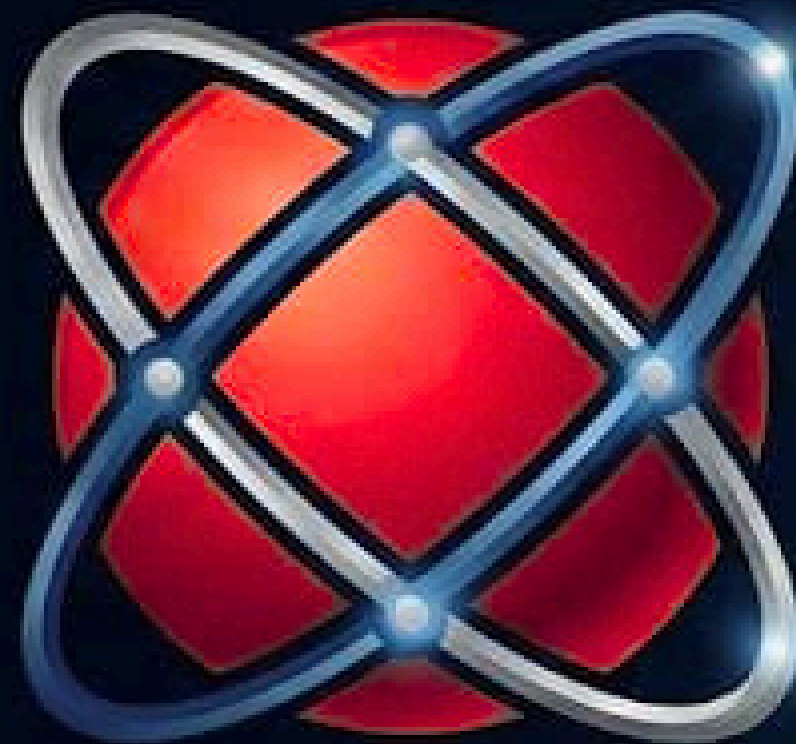


BUSINESS

PRESENTATION



coingecko



MARSEXCHANGES.COM

WORLDWIDE DECENTRALIZED NETWORK

WHAT WE OFFER

- - **Direct Referral Commission: 5%**
- - **Unlimited Referral Income: Earn from the First Four Levels.**
- - **Minimum Deposit: \$ 100**
- - **Maximum Deposit: \$ 1,00,000**
- - **Minimum Withdrawal: \$ 50**
- - **Level Income :**
- **10% Direct Referral From First Level .**
- **5% Direct Referral From Second Level .**
- **3% Direct Referral From Third Level .**
- **2% Direct Referral From Fourth Level**

- Fees: Applicable based on market rates.

MARS EXCHANGE

PRIVILEGE

1

When You Are Depositing Your Funds, It Goes To Main Wallet Mining . Daily You Will Get Profit.

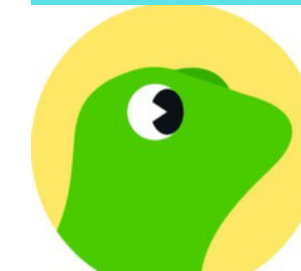
If you Deposit **100 \$** Dollars In Main Wallet, A Day You will Get Daily **0.15 %** Yield Of Your Funds For Lifetime .
Capital Withdraw Anytime.

If you Deposit **1000 \$** Dollars in Staking, A Day You will Get Daily **0.35 %** Yield Of Your Funds .
Staking Wallet **600=2.1X**
600 days funds will be double.

When Your Team Members Reached **10,000 \$** Team Work ,Then You Will Get **250 \$** Complimentary Bonus, This Bonus Client Can Do Withdraw Anytime.

2

3



coingecko

MAIN WALLET



Pricing (\$)

DAILY

WEEKLY

MONTHLY

100 (\$)

- (Daily) 0.15 % X 1
- 0.15 (\$)

- (Weekly) 0.15 % X 7
- 1.05 (\$)

- (Monthly) 0.15 % X 30
- 4.50 (\$)

1,000 (\$)

- (Daily) 0.15 % X 1
- 1.50 (\$)

- (Weekly) 1.50 \$ X 7
- 10.50 \$

- (Monthly) 1.50 \$ X 30
- 45 Dollars (\$)

10,000 (\$)

- (Daily) 0.15 % X 1
- 15 Dollars (\$)

- (Weekly) 15 Dollars (\$) X 7
- 105 Dollars (\$)

- (Monthly) 15 Dollars (\$) X 30
- 450 Dollars (\$)

STAKE WALLET



Pricing (\$)

DAILY

WEEKLY

MONTHLY

500 (\$)

- (Daily) 0.35 % X 1
- **1.75 (\$)**

- (Weekly) 1.75 (\$) X 7
- **12.25 Dollars (\$)**

- (Monthly) 1.75 (\$) X 30
- **52.50 Dollars (\$)**

1,000 (\$)

- (Daily) 0.35 % X 1
- **3.50 Dollars (\$)**

- (Weekly) 3.50 (\$) X 7
- **24.50 Dollars (\$)**

- (Monthly) 3.50 (\$) X 30
- **105 Dollars (\$)**

10,000 (\$)

- (Daily) 0.35 % X 1
- **35 Dollars (\$)**

- (Weekly) 35 Dollars (\$) X 7
- **245 Dollars (\$)**

- (Monthly) 35 Dollars (\$) X 30
- **1050 Dollars (\$)**

Direct Referrals

DIRECTLY

5 %

Level Income

LEVEL - 1

10 %

LEVEL - 2

5 %

LEVEL - 3

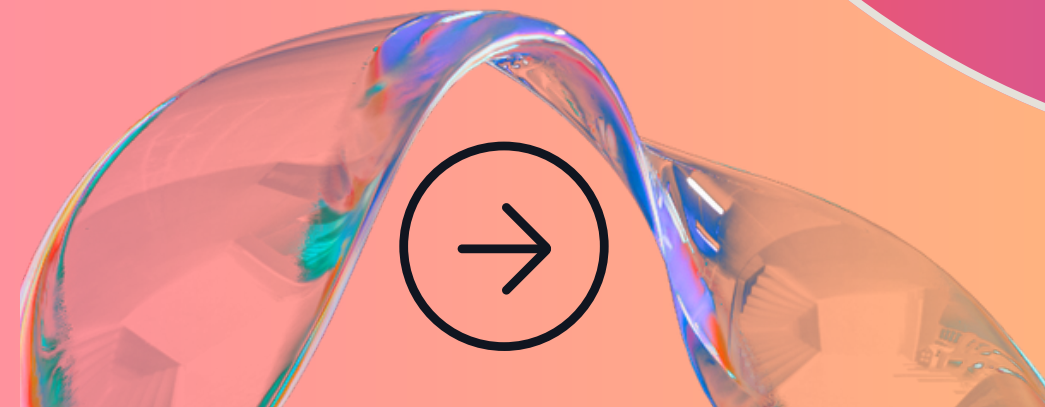
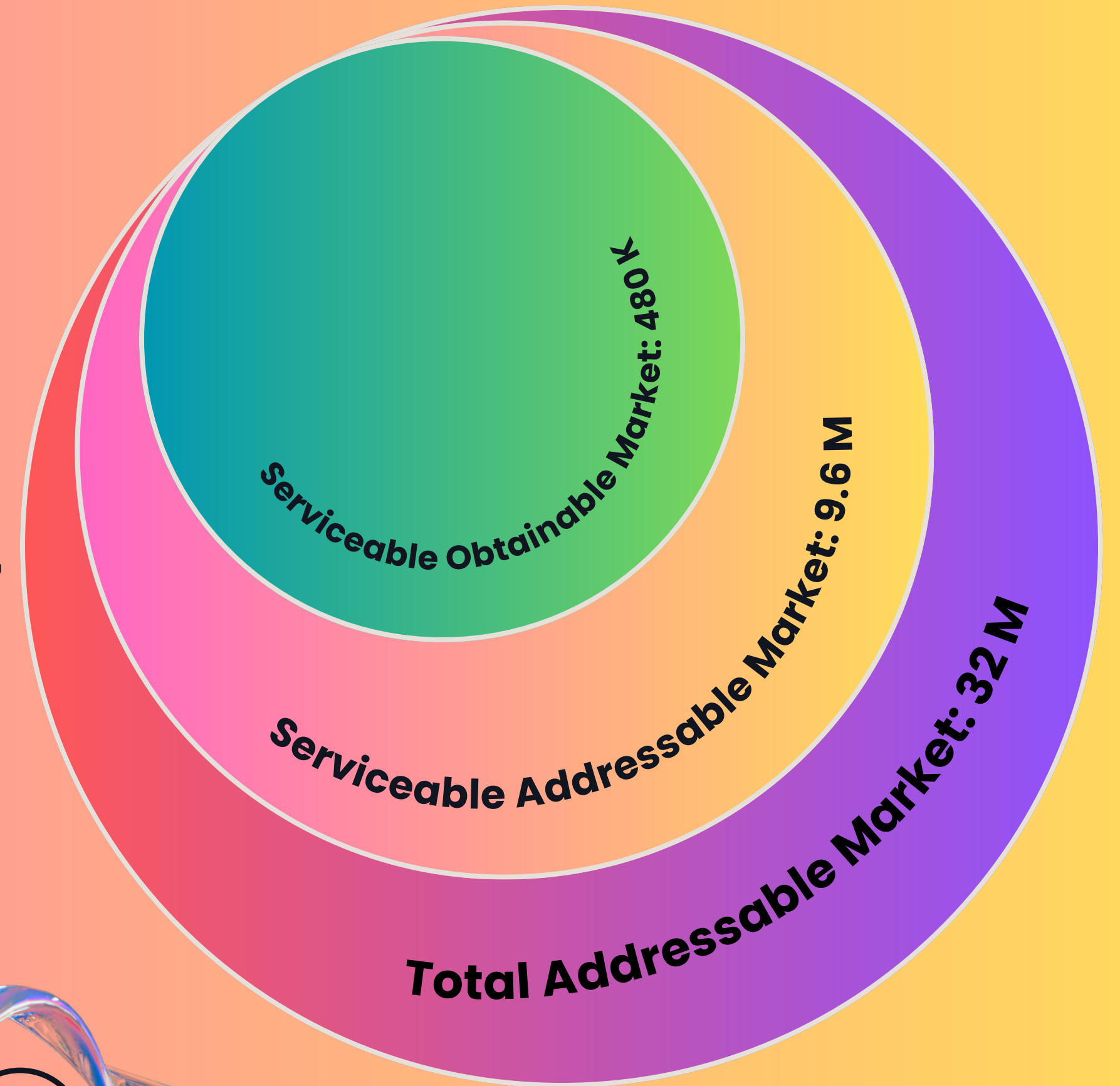
3 %

LEVEL - 4

2 %

SIZE OF MARKET

UNDERSTANDING THE MARKET SIZE IS IMPORTANT FOR US. IN THE VSP, THERE ARE ABOUT 32 MILLION SMALL BUSINESSES. WE'RE AIMING AT INDUSTRIES LIKE TECHNOLOGY, E-COMMERCE, AND PROFESSIONAL SERVICES, WHICH ARE ABOUT 30% OF ALL SMALL BUSINESSES. THAT MEANS WE'RE LOOKING AT AROUND 9.6 MILLION POTENTIAL CUSTOMERS. OUR GOAL IS TO GET ABOUT 5% OF THEM, WHICH WOULD BE ROUGHLY 480,000 BUSINESSES. THIS HELPS US KNOW WHO TO TARGET AND PLAN OUR GROWTH STRATEGY.





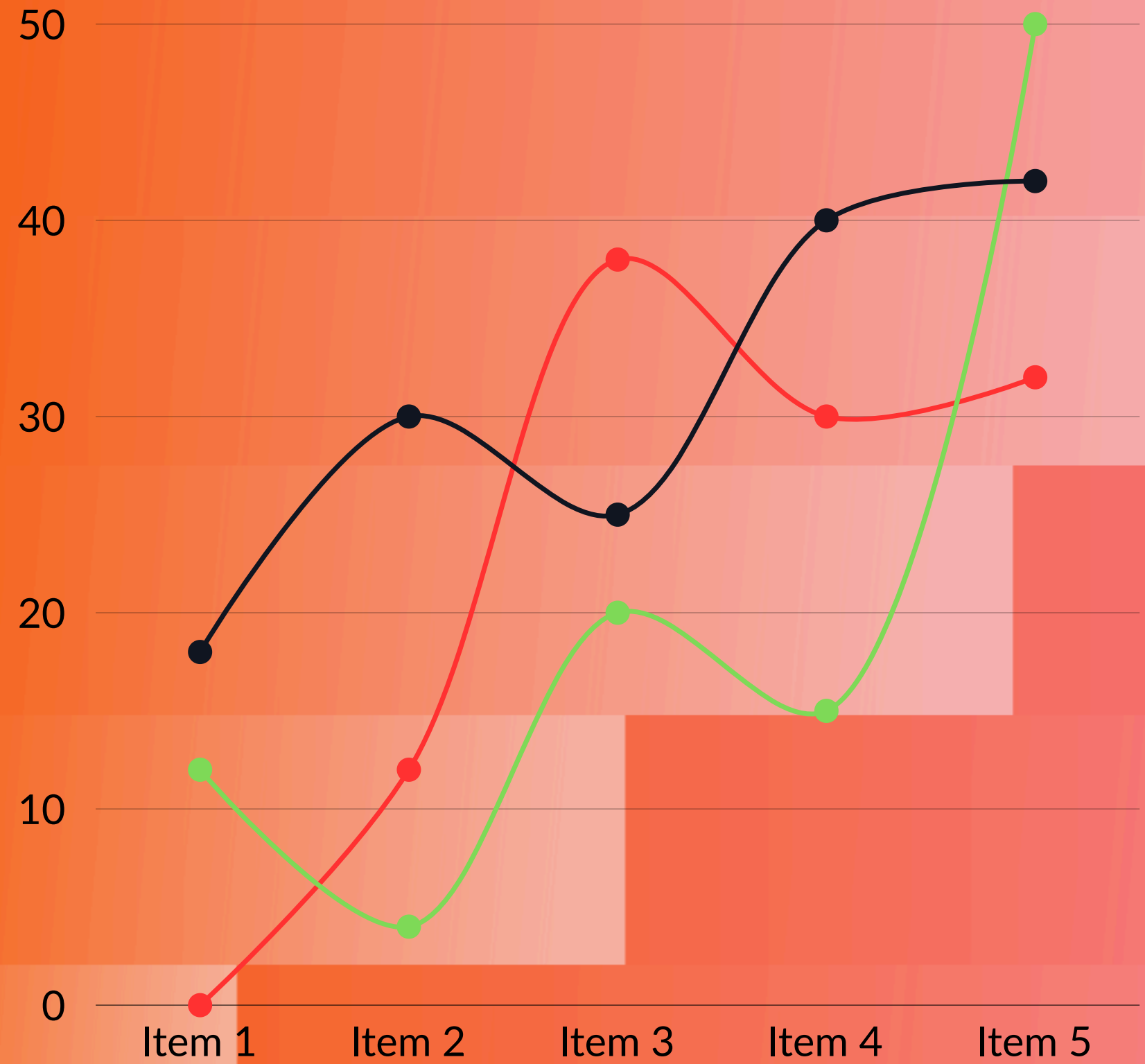
TRACTION

THIS MATRIX PROVIDES A SNAPSHOT OF VARIOUS SUCCESS METRICS FOR OUR COMPANY, INCLUDING REVENUE GROWTH, CUSTOMER SATISFACTION, MARKET SHARE, EMPLOYEE RETENTION, INNOVATION, AND BRAND REPUTATION.

90% ANNUAL REVENUE GROWTH

90% MAINTAIN CUSTOMER SATISFACTION RATINGS

50% MARKET SHARE IN KEY SEGMENTS



BONANZA ON LEVEL INCOME PLAN

LEVEL 1

 **10 LAKHS**
BUSINESS

 **\$250** BONANZA

 **JAMMU & KASHMIR**
PAHALGAM TRIP

 (WITHIN **45** DAYS)

LEVEL 2

 **30 LAKHS**
BUSINESS

 **\$500 +**

 **GOA TRIP**

 (WITHIN **60** DAYS)

LEVEL 3

 **70 LAKHS**
BUSINESS

  **\$750**
BONANZA

 **INTERNATIONAL**
BANGKOK TRIP

 (WITHIN **75** DAYS)

LEVEL 4

 **1 CR**
BUSINESS

 **BRANDED**
ERTIGA 

 **NATIONAL TRIP**
WITH FAMILY


 (WITHIN **90** DAYS)

ALL FOUR LEVELS BONUS

 **10 CR** BUSINESS
CUMULATIVE

 **MONTHLY ₹1 LAKH SALARY**
UPTO 100 MONTHS

 (WITHIN **150** DAYS)

 **coingecko**

COMPANY VALUES

- **The Setting: Bangkok, Seoul, Jakarta. Skyscrapers rose, factories hummed, and the financial markets pulsed with optimism. Foreign money, or "hot money," poured in. Local banks and corporations borrowed heavily in US dollars, confident that their currency's fixed rate would never change.**
- **Everyone felt rich, investing in speculative ventures like property and over-leveraging their companies. The government and business circles were often too closely tied, a practice sometimes called "crony capitalism."**



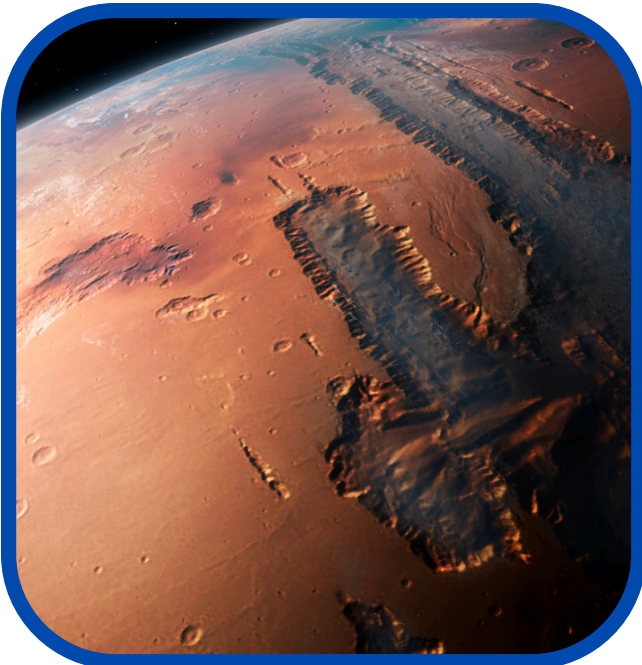
coingecko



> Note : on Transactions: Additional fees are applicable on transactions based on current market rates.

COMPANY HISTORY

- From The Last **8 Years** In The Market, We Faced Many Failure Situations , Many Technical Issues Of The Market Ups and Downs Struggles But What We Promised From The Market To Client Never Face Any Problem From The Client Criteria
- They were models of growth, attracting massive amounts of foreign investment with high interest rates and stable, Fixed Exchange rates pegged to the U.S. Dollar(USD), Japanese Yen (JPY)



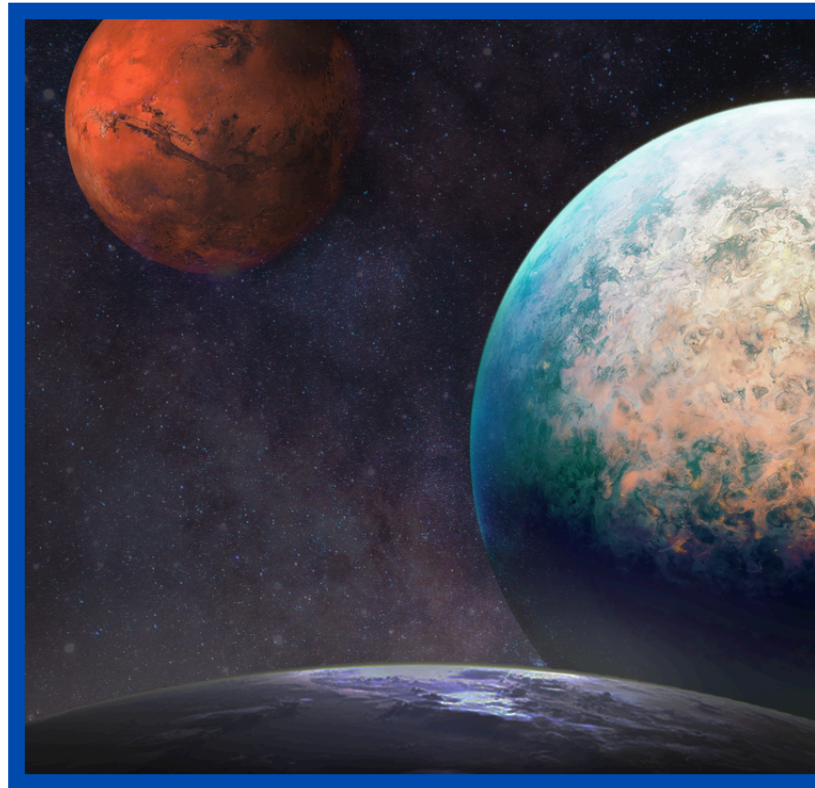
> **Note** : on Transactions: Additional fees are applicable on transactions based on current market rates.



coingecko

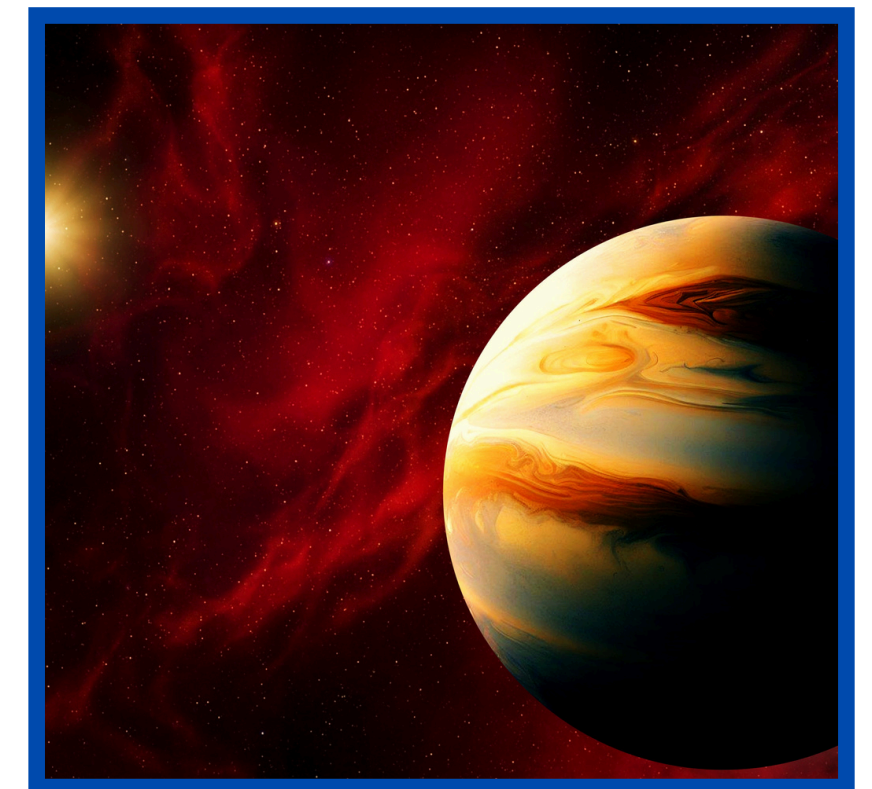
OUR FUTURE **PROJECT**

That is an incredibly generous and significant initiative! Giving future financial exchange to everyone in your company sounds like you are implementing a company-wide financial wellness or equity plan.



If "financial exchange" means providing knowledge and resources to manage personal finances, you are likely referring to:

To best explain what this means and what the next steps might involve, I need a little more clarity on what you mean by "financial exchange."



> **Note** : on Transactions: Additional fees are applicable on transactions based on current market rates.



coingecko

OUR COMPANY

MISSION

This is a great request! One of the most important "exchange missions" in Japan's history—one that entirely changed its financial and economic destiny—was the Iwakura Mission of 1871-1873. Here is a small story about a finance-focused part of that mission:



coingecko

1

The Target : Mars Exchange

The mission traveled for months, observing everything from factories in New England to schools in Germany. But their most critical stop for financial exchange was the heart of the world's economy: The City of London.

2

The delegates, accustomed to a Japanese economy based on rice yields and coin loans, were overwhelmed. They toured the Bank of England, a monolithic structure of stone and power, and were shown the intricate mechanics of central banking, national debt, and paper currency.

3

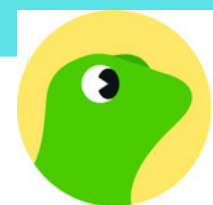
They saw how the British government raised massive capital through bonds and how the Bank controlled the flow of money, enabling the vast British Empire to function.

> **Note** : on Transactions: Additional fees are applicable on transactions based on current market rates.

OUR COMPANY **VISION**

One evening, a story goes that a junior member of the mission remarked with a mix of awe and shame about the opulence of London's financial district, comparing it to the poverty he saw just blocks away—beggars sleeping under bridges and factory workers living in squalor.

"The poverty you see is a tragedy, but the power you see comes from the system. We will not copy their squalor, but we must copy their Bank. A nation without credit is a puppet. A nation that controls its own currency controls its own destiny."



coingecko

1

The Vision: Global G-HUB and Corporate Value

The Japan Exchange Group (JPX) has articulated a vision to evolve into a "global, comprehensive finance and information platform" by 2030, which they internally refer to as "G-HUB" (Heighten market integrity, Unlock opportunity, Benefit society).

This vision is built on three main pillars of transformation:

2

3

> Note : on Transactions: Additional fees are applicable on transactions based on current market rates.

OUR COMPANY PERFORMANCE

That's an excellent question. The performance of the Tokyo Exchange (TSE), operated by the Japan Exchange Group (JPX), has been exceptionally strong recently, driven by a confluence of fundamental corporate reforms and favorable macro trends.

The overall story of the Tokyo financial exchange's performance in recent years is one of major revitalization and breaking through decades-old stagnation.



299K
IN
2022

992K
IN
2026

The period since the major market restructuring in April 2022 and the subsequent corporate governance reforms (March 2023) has been transformative for the performance of the Japanese equity market.

Nikkei 225 & TOPIX: Both the bellwether Nikkei 225 and the broader TOPIX (Tokyo Stock Price Index) have delivered significant returns, with the Nikkei 225 surpassing its historic 1989 bubble-era peak in 2024.

Recent Year Growth: The Nikkei 225 index has shown annual growth in the range of 25% to 30% over the recent year (as of late 2026).

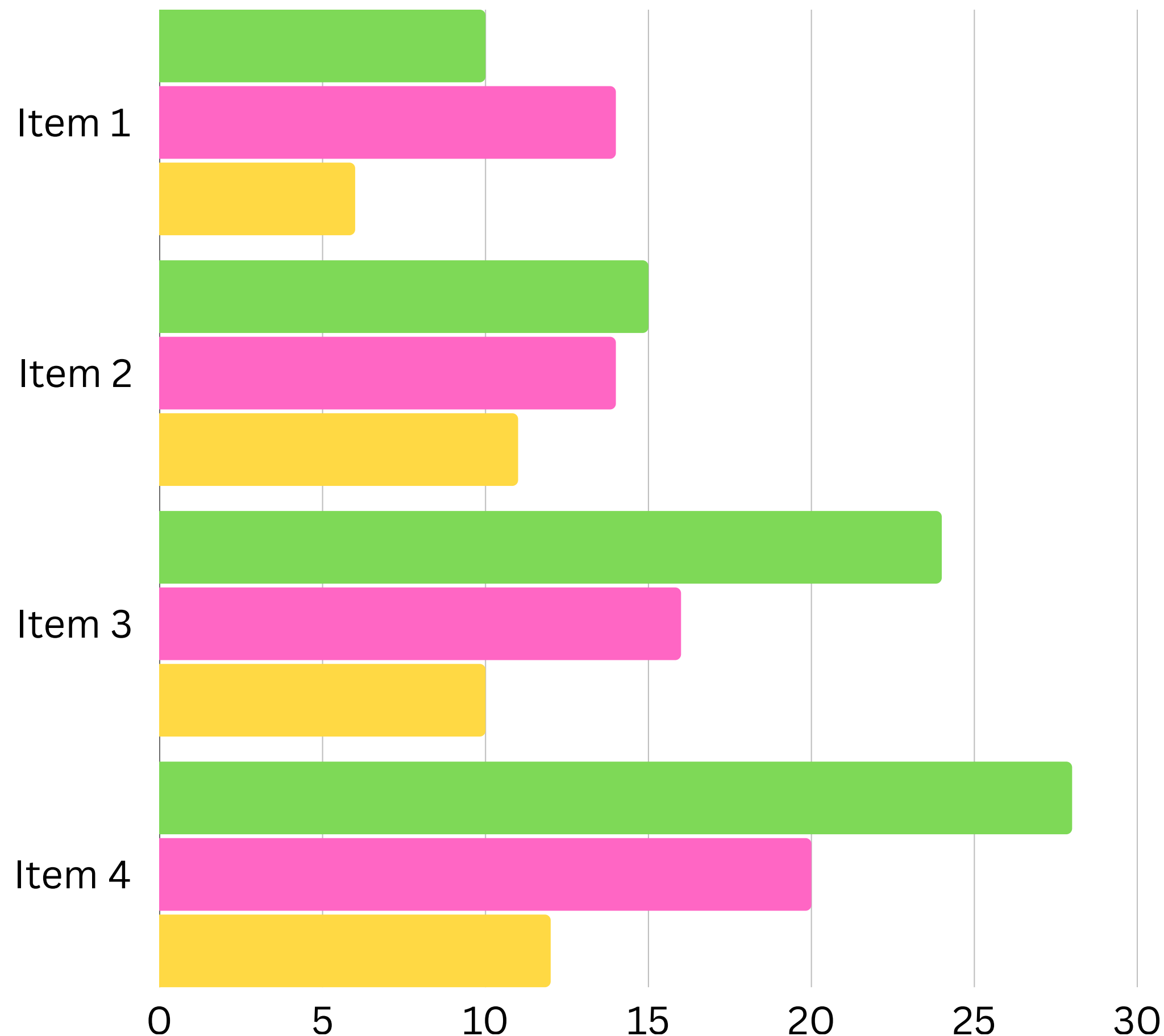
OUR YEARLY FLOW CHART

The performance surge is not purely due to global trends; it's a .direct response to the JPX's push for corporate change.

A consistently weak Japanese yen (USD/JPY) has dramatically boosted the profitability of Japan's major exporting companies (like automakers and electronics firms), making their earnings, when translated into yen, look very strong.

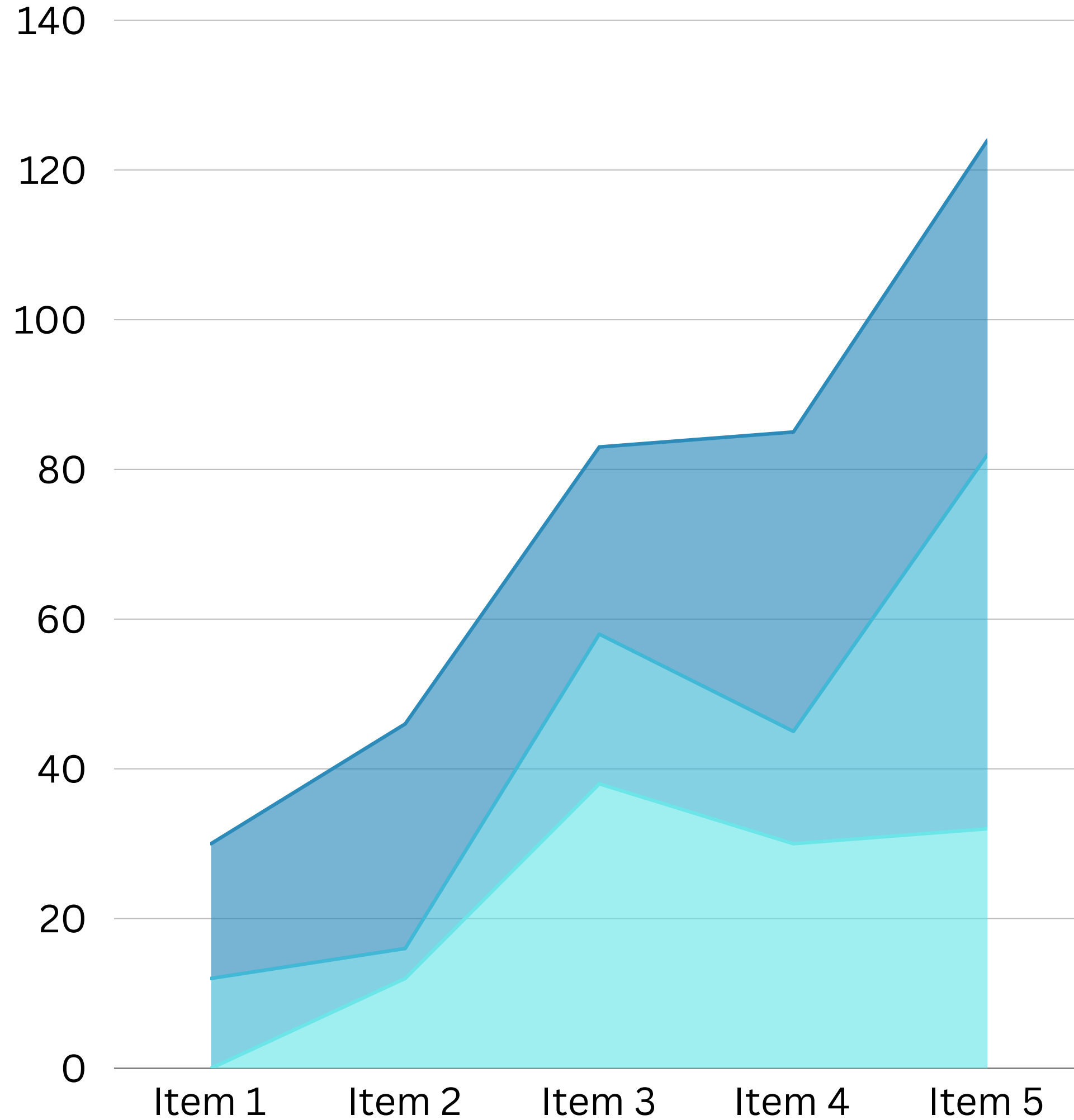


coingecko



DETAILS

Index Value (Nikkei, TOPIX)	Strong Growth (Double-digit percentage)
Foreign Investor Interest	Massive Inflows (Record highs)
PBR Improvement	Significant Rise (Many stocks move above 1x)
Trading Volume	Increased



OUR NEW PLANNING



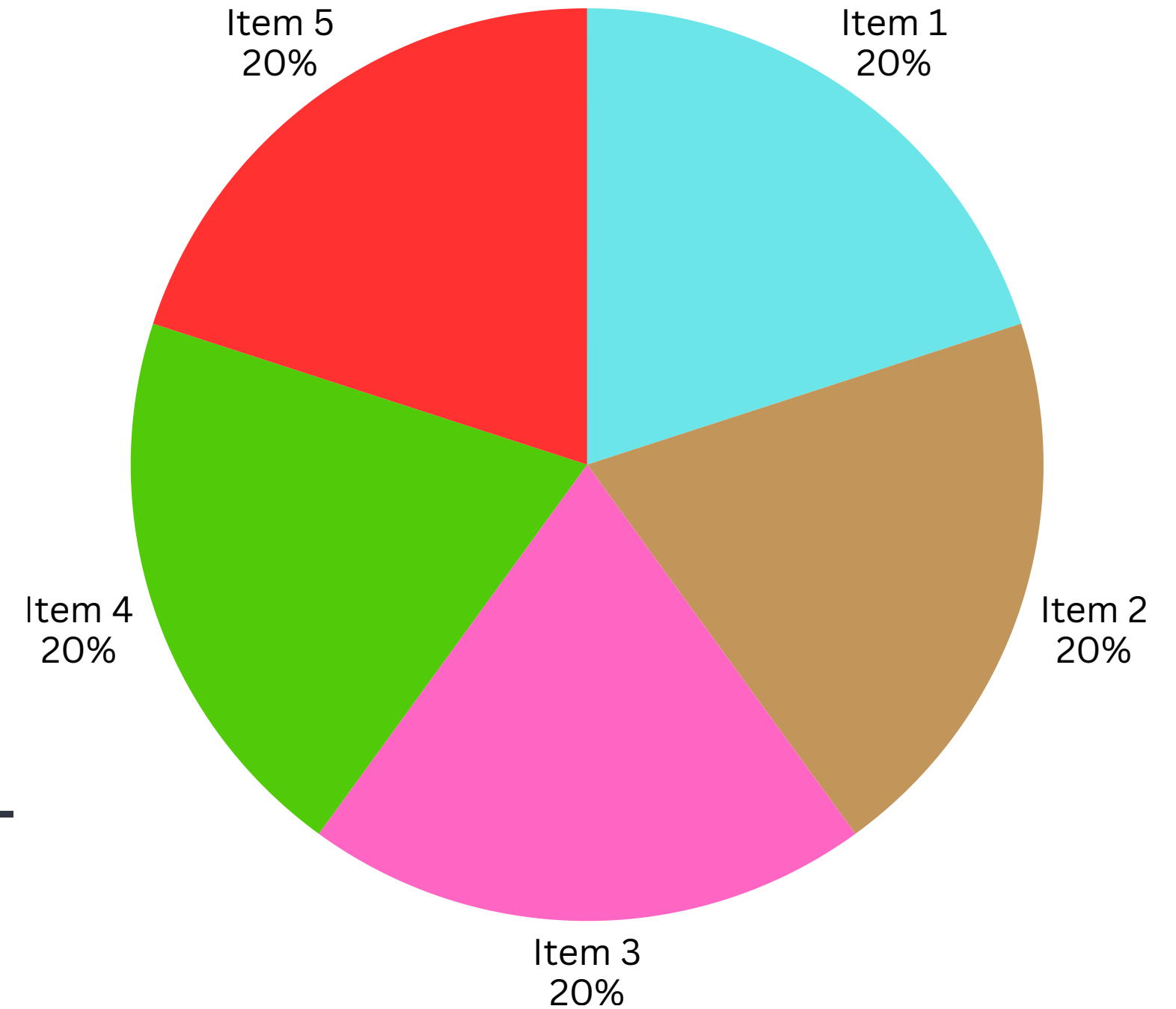
The future planning of the Tokyo Exchange (TSE), under the Japan Exchange Group (JPX), is a comprehensive and ambitious strategy aimed at cementing its status as a leading global financial center.



coingecko

This planning is primarily driven by their long-term vision, "Target 2036," which is currently in its final stages of the first three-year Medium-Term Management Plan (ending in 2014), and is now preparing for the next phase (starting in 2025).

Here are the four core pillars of the Tokyo Exchange's future planning:



coingecko

THANK YOU



MARSEXCHANGES.COM

WORLDWIDE DECENTRALIZED NETWORK

VISIT US



24/7 Support



support@marsexchanges.com